

FEATURES



- 10.5" IPS LCD Screen (1920 x 1280 Resolution)
- Sunlight Readable LCD Display (600 nits)
- Octa-core ARM (4x Cortex-A72 @ 2.2GHz + 4x Cortex-A53 @ 1.8GHz)
- Android 15 and Linux OS
- IP66 Water & Dust Protection
- 5ft Drop / Shock Protection (MIL-STD-810H)
- Wi-Fi 2.4GHz/5GHz, Bluetooth 5.2, **Optional** 4G LTE
- **Optional:** Barcode Reader, SIM Slot
- ODM Options: CAC Card Reader Module

Experience unmatched productivity with the MW-100A Slim Rugged Tablet PC, engineered for Android and Linux OS environments. Designed to thrive in the most demanding conditions, it features IP66 waterproof protection, MIL-STD-810H-rated durability, and a sunlight-readable LCD—making it ideal for field service, construction, public safety, emergency response, manufacturing, industrial applications, healthcare, logistics, and more. With our full suite of ODM and OEM customization services, the MW-100A can be tailored to your specific requirements, including options such as a 2D barcode scanner, 4G LTE, GPS, or CAC card reader module. Choose the MW-100A for a rugged, flexible solution powered by open and scalable platforms.

SPECIFICATIONS

RUGGEDNESS

IP Rating	IP66
Drop Rating	MIL-STD-810H, Method 516.8, Procedure IV
Shock Rating	MIL-STD-810H, Method 516.8, Procedure I
Vibration Rating	MIL-STD-810H, Method 514.8, Procedure I
ESD Protection	8kV Contact / 15kV Air

SYSTEM

Processor	Octa-core ARM (4x Cortex-A72 @ 2.2GHz + 4x Cortex-A53 @ 1.8GHz)
GPU	Mali-G52 MC3
Memory	4GB LPDDR5
Storage	64GB eMMC
OS	Android 15 (default), Optional: Linux OS (Debian, Yocto, Ubuntu, or custom builds available)

DISPLAY

Screen Size	10.5" IPS LCD
Resolution	1920 x 1280
Brightness	600 nits, Backlight
Contrast Ratio	1500 : 1
Touch Screen	Capacitive 10-Point Multi-Touch, I ² C interface
Top Glass	0.7mm Hardened Cover Glass

COMMUNICATIONS

Wi-Fi	Dual-band 2.4GHz / 5GHz
Bluetooth	Bluetooth 5.2
4G LTE (Optional)	4G LTE module via M.2 interface
GPS	Optional

POWER

AC Adapter	110-220V AC input, 12V/3A DC output
Battery	2S1P 7.6V 3822mAh (29.05Wh), Li-ion battery

I/O INTERFACE

Sensors	G-sensor, Light Sensor
Audio	2 x 1W / 8Ω speakers 1 x Built-in Mic
Camera	Front Camera: 5MP Rear Camera: 8MP with Auto Focus
Ports	2 x USB Type-C (USB 3.1, Charging, Display) 1 x 14-pin Docking Connector (USB 2.0 & Charging) Optional: 1 x 10 Pin PoGo Pin Connector on Rear Chassis (Support USB 2.0) Optional: 1 x SIM Slot
Buttons	Power On/Off Button Volume+/- Button 1 x Programmable Button
Barcode Scanner	Optional: Integrated 2D Barcode Scanner

MECHANICAL

LED	1 x Charging Indicator, 1 x Power Indicator
Dimensions	246.6 x 185.6 x 11.6mm
Weight	800g
Mounting	VESA 75 x 75 mm, Screw Spec: M3

ENVIRONMENTAL

Temperature:	
- Operation	0°C to 50°C
- Storage	-20°C to 60°C
Humidity	10%–90% RH (non-condensing)

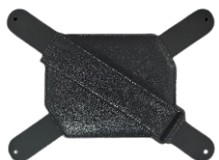
REGULATORY

Certification	FCC, CE, IATA Medical Certifications (Available upon request)
----------------------	--

DIMENSIONS AND SYSTEM LAYOUT



ACCESSORIES



Hand Strap



Shoulder Strap



Docking Station



4-Port Charging Station

OPTIONAL APPLICATION MODULE



Built-in Barcode Reader



CAC Card Reader Module
Available as an ODM option
via rear chassis pogo-pin expansion slot